



WindPro®



ENHANCING YOUR PROJECT RETURNS IN OFFSHORE RENEWABLES



G8 Subsea

G8 is a Singapore-Norwegian based subsea technology company with present operations throughout in Asia. The company serves project owners, leading installation companies worldwide with innovative subsea construction technologies & experienced management to deliver effective front to end solutions to windfarms in Asia.



WindPro®

WindPro® services is designed to offer industry leading technical and consultancy services to Windfarm developers and Installers to enhance the return of investment of each project through sound technical management and technical innovations derived from subsea engineering, market knowledge and expertise.



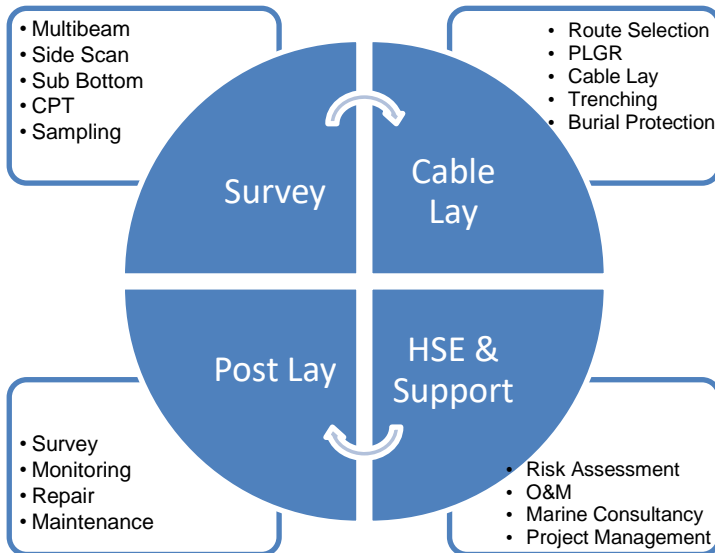
“Accelerating offshore renewable projects by ensuring returns of Investments and protecting long term operations.”



WindPro®



OFFSHORE WINDFARM & SUBSEA CABLE ENGINEERING SERVICES



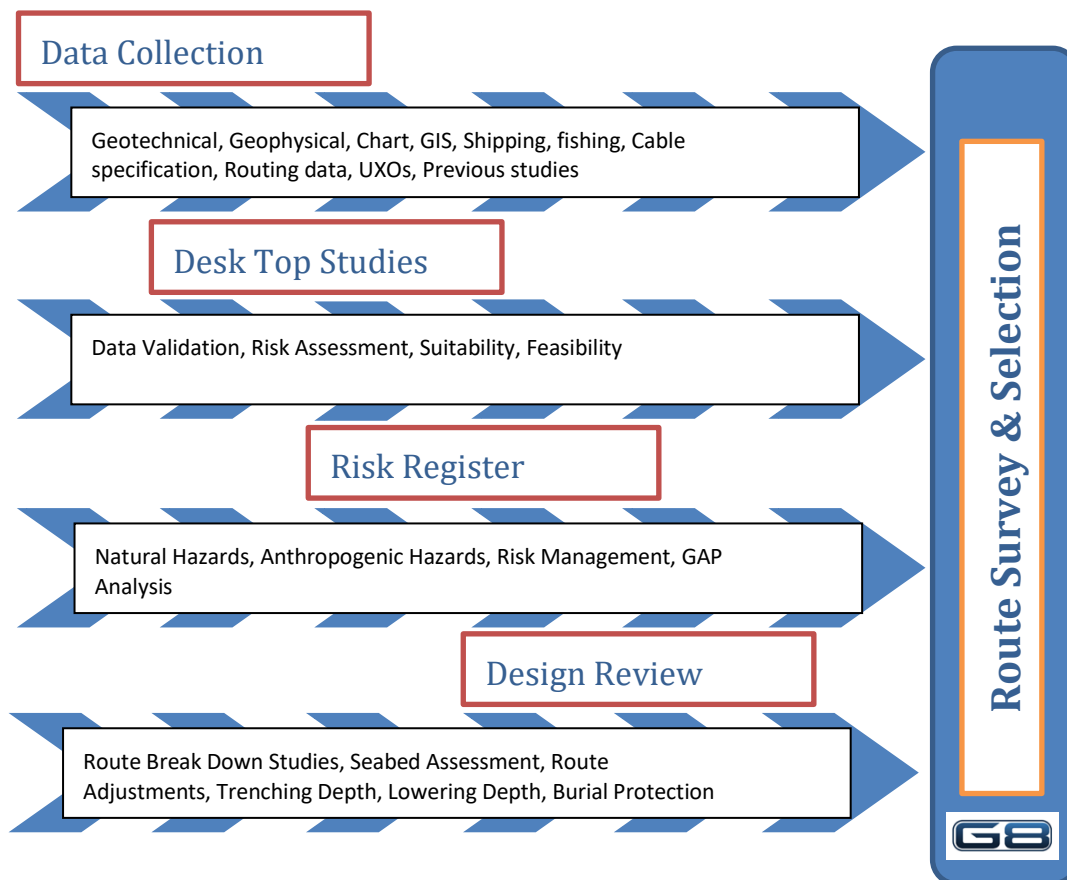
G8 WindPro® Overview

WindPro®, provides comprehensive expertise in the planning, design and construction of windfarm cable systems. It contributes to every aspect of windfarm engineering project; providing technical and commercial knowledge right from the beginning from site surveys, cable route survey, risk management, route clearance, subsea cable installations, burial protection, project engineering, project management, repair & maintenance services and vessel support.



WindPro® Cable Route Selection

This vital resource brings essential insights into cable routing around natural and manmade hazards, environmental requirements and regulatory processes. Our studies incorporate information gathered from academia and industry and has developed over 25 years of working with data from seabed bathymetry to ocean currents, through shipping, fishing and marine activities. Our investigative site visits for cable landings cover all aspects of physical, regulatory, environmental and commercial considerations.





WindPro®



WindPro® Survey

Application

Cable Route Survey
Inspection & Monitoring

Methodology

Traditional: Ship / Boat
Novel: AUV / ROV

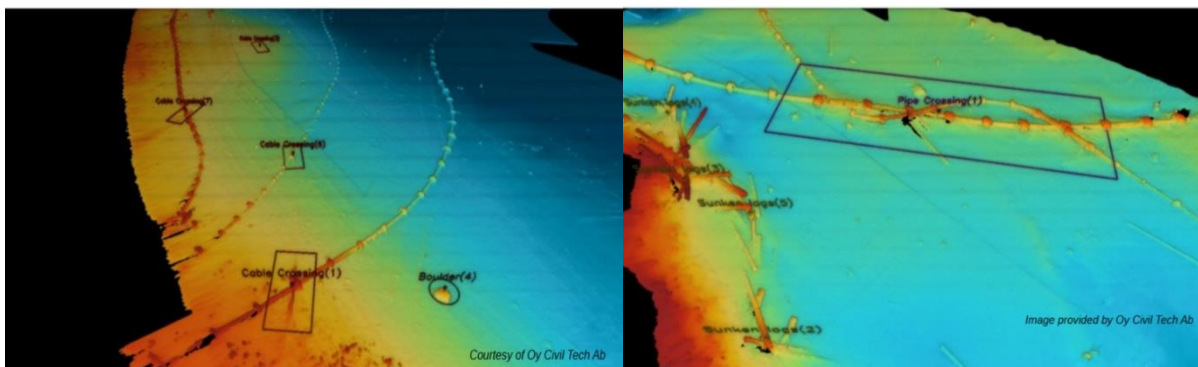
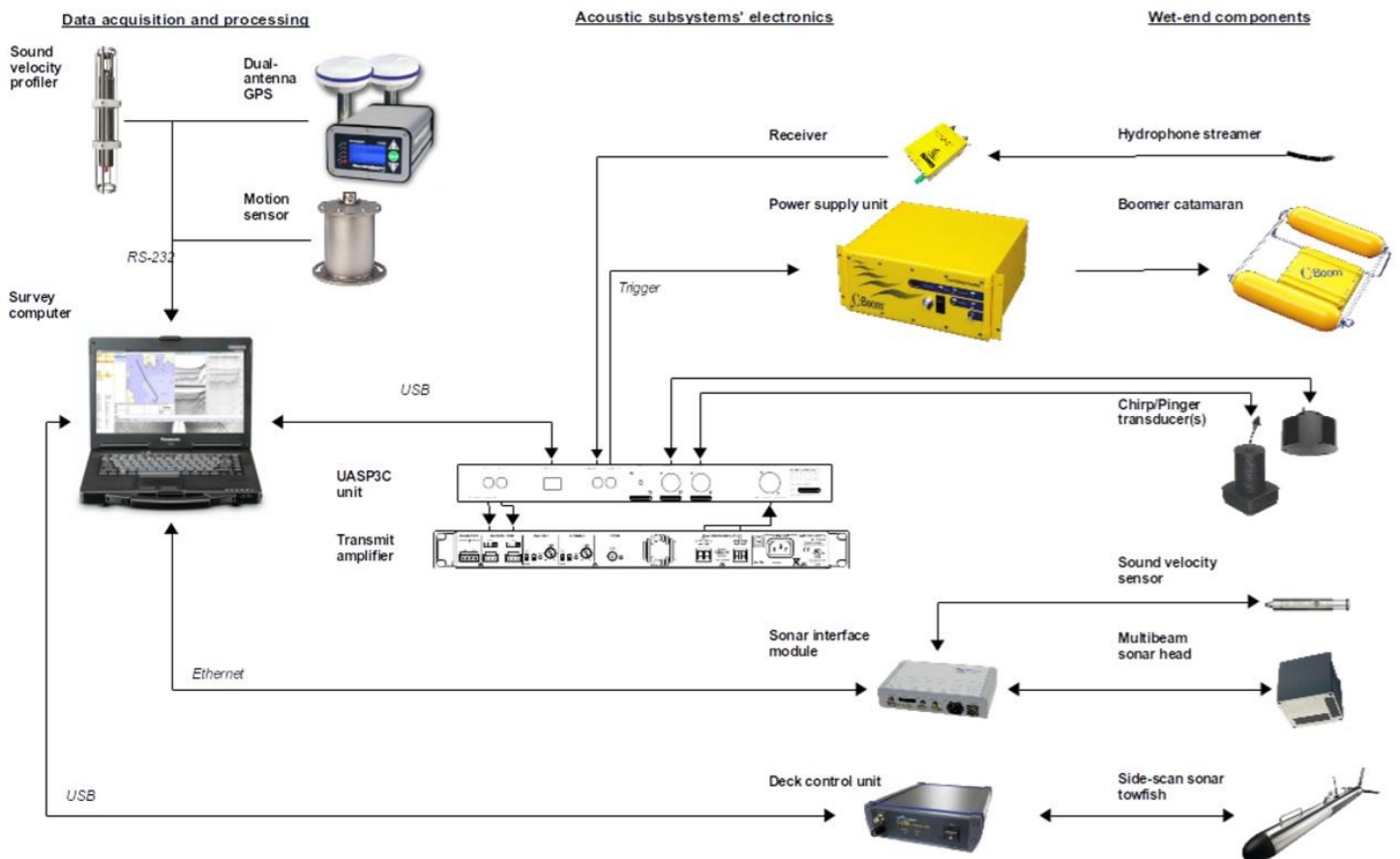
Sub Bottom Profiler Survey

Multi Beam Bathymetric Survey

Side Scan Sonar Survey

Land Topography Survey

Cone Penetrometer Testing





WindPro®



WindPro® Cable Lay



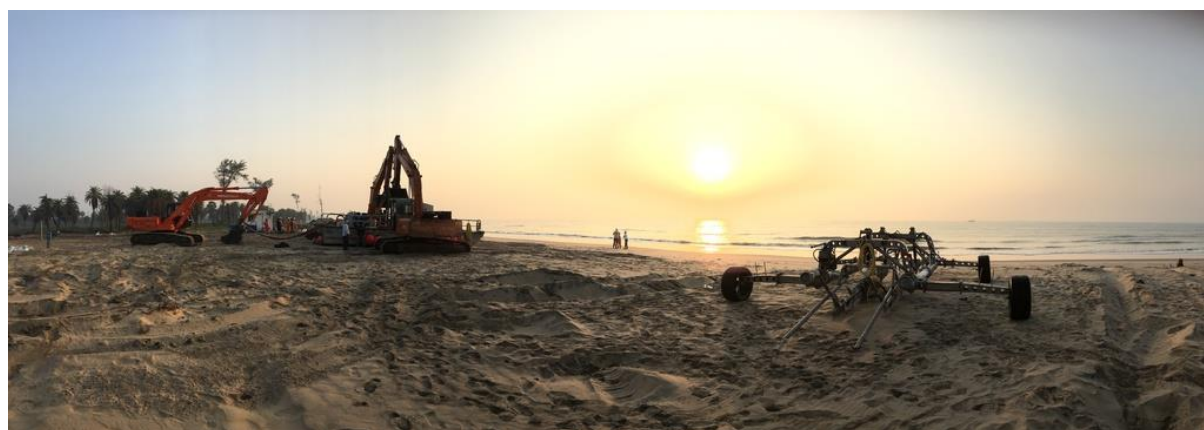
Cable Ship

Cable lay vessel is equipped for both shallow water and deep-sea cable laying with 2 main tanks and 1 spare tank with total of 5000T cable capacity. The Kongsberg Simrad DP2 class vessel has a 360o pedestal 30T @ 8m knuckle boom crane and two 360o pedestal knuckle boom deck cranes of 2.5T @ 20m and 5T@11m. Fitted with A frame of SWL 60T. The helideck and fire -fighting is in accordance with CAP 437 and fully air-conditioned flag state certified accommodation for 84 pax.



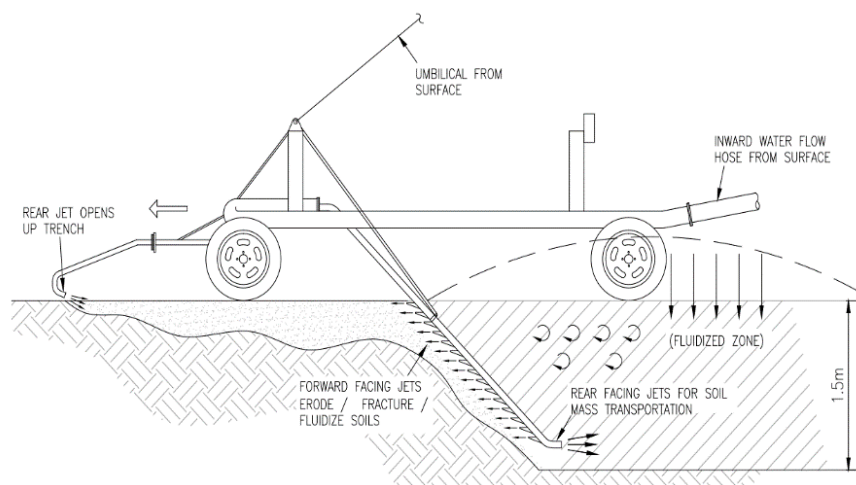
Multicat

WindPro® Multicat vessel is designed for multiple roles undertaking varied assignments in diverse working environments. The low draft vessel with G8's equipment onboard provides support to subsea burial operation. The 2000 BHP, 30T bollard power is effective in shallow water and provides accommodation for 10 pax. The wheelhouse has also 360-degree visibility which ensures the highest standards of the safety on deck.



WindPro® Cable Burial and Protection

G8 CablePro® services provides technology & resources involved in cable laying along rivers and harbours and trenching of array cables in difficult conditions. This has firmly established our knowledge of marine surveying, sediments and cable engineering, to ensure risk mitigation. We create confidence to make the right commercial and technical decisions on cable burial technology to achieve a safe and effect cable installation.



Trenching Machine

A high velocity jetting trencher designed with no moving parts during trenching engagement designed to avoid stress and damage to cable and pipelines.

Specification	DPT-5	SRT	PLT
Product	Cable / Umblical / Pipeline	Cable/ Umblical /Pipeline	Cable/Pipelines
Trenching Method	Jetting	Jetting	Jetting
Max Burial Depth	3m	3m	3m
Power	Top fed from pumping barge	Top fed from pumping barge	Top fed from pumping barge
Operational Depth	60m	60m	60m
Seabed Type	Sand, Silt, Gravel & Clay	Sand, Silt, Gravel & Clay	Sand, Silt, Gravel & Clay
Soil Strength	Upto 250KPa	Upto 250 KPa	Upto 250KPa
Weight in Air	850 Kg	800 Kg	1300 Kg
Dimensions	4.5Lx3.7Wx1H m	4.2Lx3.7W2x1.4H m	